

# Company Profile 2026

Integrated Heavy Equipment Parts Supply & Industrial Services



**PT. TRIJAYA PRIMA PERSADA**  
Built on Trust

Our integrated business structure allows us to provide flexible and comprehensive solutions through multiple operational units.

Integrated Business Unit:

PT Trijaya Prima Persada | CV Trijaya Prima | CV Jeslyn Jaya Teknik

# About Company & Journey

“From parts supply to integrated industrial solutions.”

**Trijaya Group** is an integrated business providing heavy equipment parts, industrial services, and marine support across mining, construction, and marine industries.

Supported by a strong supply chain and professional technical team, we ensure reliable product availability, competitive pricing, and fast response to meet customer needs.

Our business is strengthened by an integrated structure consisting of parts supply, technical services, and proprietary brand development, enabling us to deliver comprehensive end-to-end solutions.

*Our integrated business structure ensures reliable supply, efficient operations, and comprehensive service support for our customers.*

## **CV TRIJAYA PRIMA (2015)**

Sales, Inventory & Supply Support

*Spare Parts Supply & Distribution*

*Focused on supporting heavy equipment and industrial needs.*

[www.trijayaprima.com](http://www.trijayaprima.com)

## **CV JESLYN JAYA TEKNIK (2020)**

Sales, Fabrication, Repair & Maintenance Services

*Fabrication, Repair & Engineering Services*

*Expanding capabilities into technical services and workshop operations*

[www.jeslynjayateknik.com](http://www.jeslynjayateknik.com)

## **TJ-PARTS (2025)**

Brand Development

*Proprietary brand for high-quality heavy equipment parts*

*Strengthening product reliability through global sourcing and quality control.*

[tj-parts.com](http://tj-parts.com)

## **PT TRIJAYA PRIMA PERSADA (2026)**

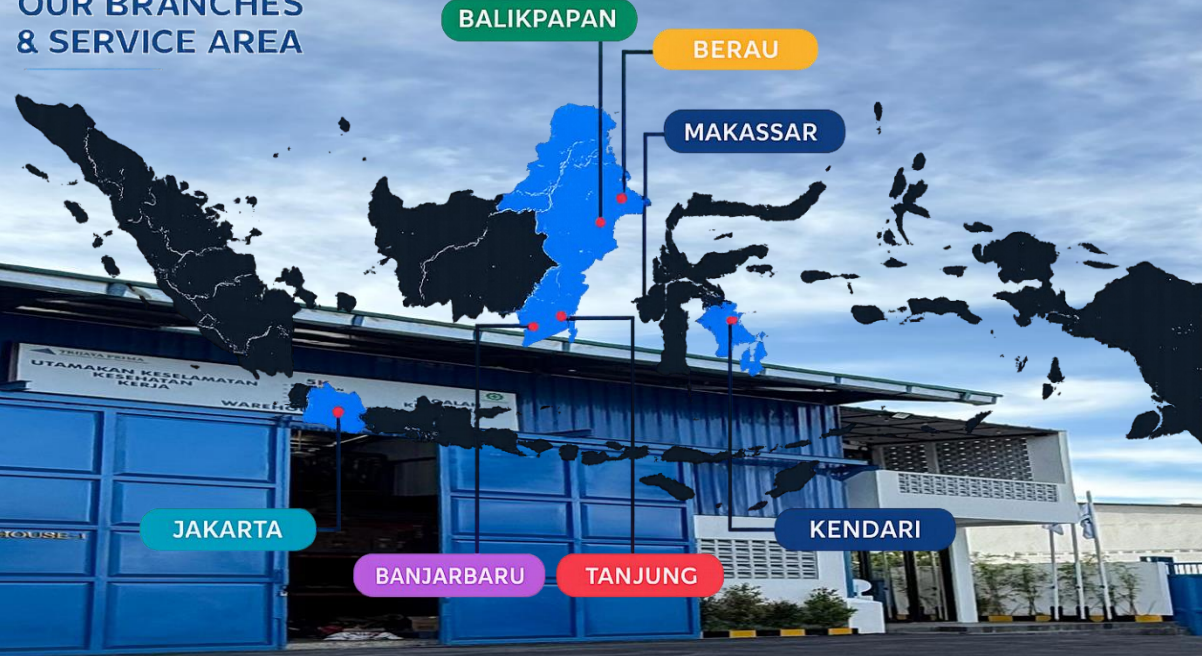
Main Company – Sales & Customer Handling

*Integrated Heavy Equipment Solutions*

*Delivering end-to-end solutions covering parts supply, engineering, and services.*

[www.trijayaprimapersada.com](http://www.trijayaprimapersada.com)

OUR BRANCHES  
& SERVICE AREA



**TJ-PARTS**  
SOLUTION FOR FUTURE

**TJ Industrial**  
Industrial Parts & Service

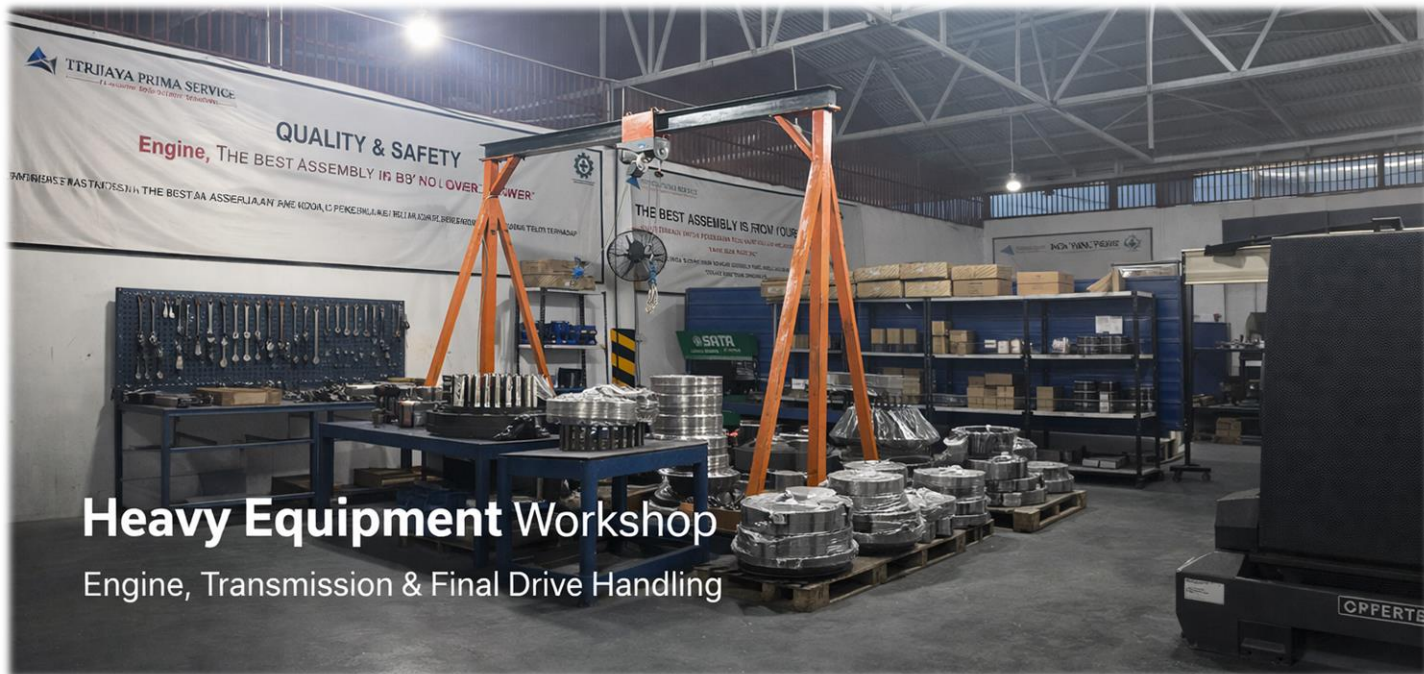
# Our Office & Branch Network

“Supported by multiple branches to ensure fast response and reliable service across project locations.”



## CNC Machining & Fabrication Facility

Equipped with advanced CNC machines and skilled technicians to deliver precision engineering, custom manufacturing, and component repair solutions.



## Heavy Equipment Workshop

Engine, Transmission & Final Drive Handling



**TJ-PARTS**  
SOLUTION FOR FUTURE

**TJ Industrial**  
Industrial Parts & Service

# Our Facilities

## Warehouse Management Facilities

Our headquarters for integrated operations and service.



# Core Business

Trijaya Group is an integrated business providing solutions for **heavy equipment and marine industries** across mining, construction, and offshore operations.

Trijaya Group delivers integrated heavy equipment solutions through the following core business areas:

## ● Spare Parts Supply

Reliable supply of heavy equipment spare parts with strong inventory support and fast distribution to ensure operational continuity.

## ● Machining & Fabrication

Precision CNC machining and fabrication services for component repair, custom parts manufacturing, and reconditioning.

## ● Engineering & Overhaul Services

Comprehensive repair and overhaul services for major components including:

- Engine
- Transmission
- Final Drive

Handled by experienced technicians with proper workshop facilities and quality control.

## ◆ Product Development (TJ-PARTS)

Development of proprietary products under TJ-PARTS brand, ensuring consistent quality, durability, and competitive performance.



**TJ Industrial**  
Industrial Parts & Service

# Spare parts Supply & Warehouse Management

Reliable supply of heavy equipment spare parts supported by an organized warehouse system and efficient inventory management. Ensuring product availability, accurate stock control, and fast distribution to support continuous operations and minimize downtime.



**TJ-PARTS**  
SOLUTION FOR FUTURE

**TJ Industrial**  
Industrial Parts & Service

## System & Quality Assurance

- Integrated ERP system using Odoo for efficient operations and real-time control
- ISO 9001:2015 certified quality management system
- Standardized processes with continuous improvement approach
- Ensuring consistency, reliability, and customer satisfaction



## Brand Support & Product Compatibility



### Product Range & Components

We provide a comprehensive range of heavy equipment parts and components, covering both **major and minor requirements** to support various operational needs, including:

#### ◇ Major Components

- Engine & Engine Parts
- Transmission Systems
- Final Drive Units
- Main Pump & Hydraulic Pumps
- Other Hydraulic Components

#### ◇ Electrical & Cabin Components

- Electrical Systems & Wiring Harness
- Alternator & Electrical Parts
- Monitor Panel & Control Systems
- Cabin Assembly & Interior Parts
- Air Conditioning (AC) Systems

#### ◇ Undercarriage & Ground Components

- Undercarriage (UC) Components
- Ground Engaging Tools (GET)

#### ◇ General & Maintenance Parts

- General Parts & Fast Moving Components
- Hydraulic Hoses & Fittings
- V-Belts & Power Transmission Parts
- Filters (Air, Oil, Fuel, Hydraulic)
- Bearings, Seals & Lubrication Parts



### Complete Parts Solution

We supply **OEM, Aftermarket, and Equivalent parts** with reliable quality and flexible sourcing options, ensuring the right balance between performance, cost efficiency, and availability for uninterrupted operations.

All products are available in **OEM, Aftermarket, and Equivalent options**, ensuring flexibility in performance, cost efficiency, and availability. Supported by strong sourcing capabilities and strict quality control, we ensure reliable performance, durability, and consistent supply for heavy equipment operations.

# Machining & Fabrication

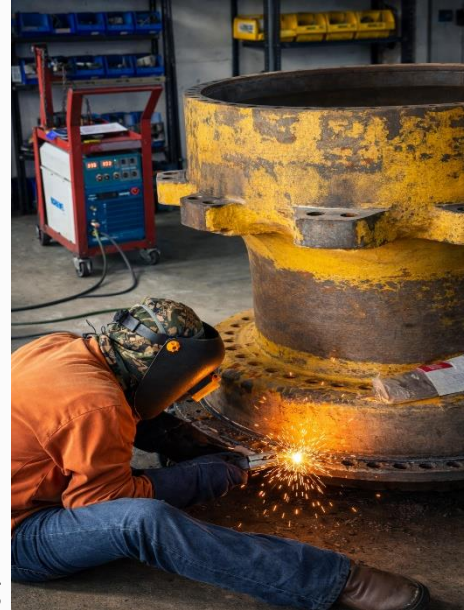
Ensuring accuracy, durability, and performance for critical components

Providing precision CNC machining and fabrication for all metal-based components, including **pins, bushings, shafts, and custom parts**. We deliver high-accuracy manufacturing, repair, and reconditioning solutions to ensure strength, durability, and reliable performance in heavy equipment operations.

- CNC Machining & Precision Engineering
- Pins, Bushings & Metal Component Manufacturing
- Custom Parts & Reverse Engineering
- Repair, Reconditioning & Modification



**TJ Industrial**  
Industrial Parts & Service



## Precision CNC Machining

Advanced machining capabilities ensuring high accuracy, consistency, and quality for heavy equipment components.





**TJ-PARTS**  
SOLUTION FOR FUTURE

**TJ Industrial**  
Industrial Parts & Service

## Our Fabrication Products

Delivering precision-engineered components for heavy equipment applications.



- Pins, Bushings & Metal Parts Production
- Custom Parts & Reverse Engineering
- Precision CNC Machining
- Component Repair & Reconditioning
- Fabrication & Modification Works



*This product is one of the components manufactured by our workshop, demonstrating our capability in producing heavy equipment parts with precision, durability, and strict quality control.*





End-to-End Solutions for Heavy Equipment Components

## Engineering Overhaul Service

We specialize in handling major components such as engine, transmission, and final drive with proper facilities, skilled technicians, and strict quality control.

Our workshop supports full-service capabilities from inspection, repair, overhaul, to final testing and delivery.



Engine Overhaul

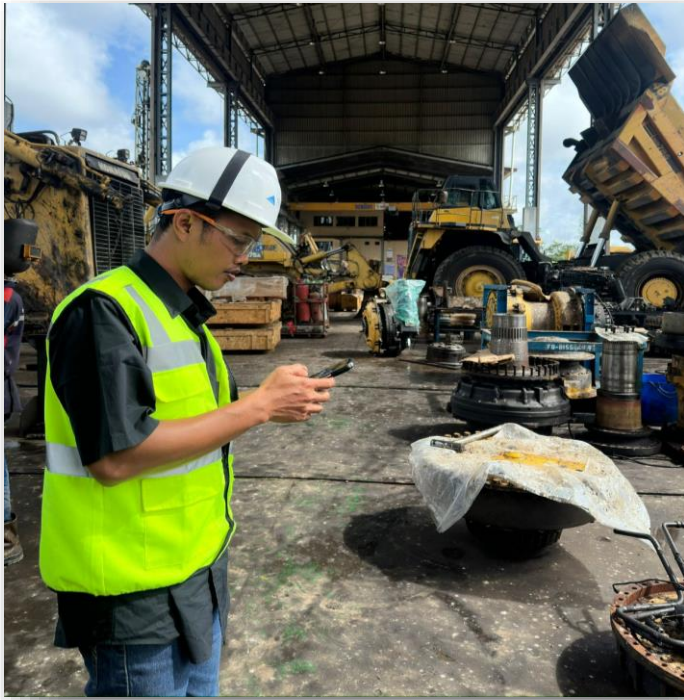


Precision Assembly



**TJ Industrial**  
Industrial Parts & Service

- Engine Overhaul
- Transmission Repair
- Final Drive Service
- Fabrication & Machining
- Precision Assembly



◇ Assembly install Cabin assy

# Our Project & Services

We support our clients with reliable on-site services, delivering efficient solutions for maintenance, overhaul, and technical projects to ensure continuous operation and reduced downtime.

---

◇ **GOH (General Overhaul) On-Site**

Complete overhaul services performed directly at customer site, reducing downtime and transportation costs.

◇ **On-Site Maintenance & Repair**

Preventive and corrective maintenance handled by skilled technicians to ensure equipment reliability.

◇ **Installation & Commissioning**

Professional support for equipment installation, setup, and operational readiness.

◇ **Troubleshooting & Inspection**

Accurate diagnostics and technical analysis to identify and resolve issues efficiently.

◇ **Manpower Support**

Provision of experienced technicians and mechanics for project-based or long-term assignments.



**TJ-PARTS**  
SOLUTION FOR FUTURE

**TJ Industrial**  
Industrial Parts & Service

# Reconditioned Components – Ready Stock

Our ready stock components are rebuilt and prepared to ensure immediate availability, helping customers minimize downtime and maintain operational efficiency.



**TJ-PARTS**  
SOLUTION FOR FUTURE

**TJ Industrial**  
Industrial Parts & Service



# Our Products Development

Delivering precision-engineered components for heavy equipment applications.

**TJ PARTS** is our proprietary brand, providing high-quality heavy equipment parts through a combination of in-house production, global sourcing, and strict quality control.



**TJ-PARTS**  
SOLUTION FOR FUTURE

**TJ Industrial**  
Industrial Parts & Service

Brand: TJ PARTS

- Custom Bushing Production (In-House)
- OEM & Replacement Parts Supply
- Global Sourcing & Rebranding (TJ PARTS)
- Quality-Controlled Components



We supply custom-manufactured components as well as carefully selected OEM and replacement parts to meet various operational requirements.



# Thank you

We are ready to support your operations with reliable products and professional services.

---

## Contact & Office Information

### Balikpapan Head Office

**Address:** Jl. Perjuangan Gg. Damai, RT.33/RW.No.6, Gn. Samarinda, Kec. Balikpapan Utara, Kota Balikpapan, Kalimantan Timur 76125

Email : [Info@trijayaprima.com](mailto:Info@trijayaprima.com)

Inquiry : [sales@trijayaprima.com](mailto:sales@trijayaprima.com)

Telp : + 62 542-4650453

WhatsApp : + +62 812-5328-1506

Website : [www.trijayaprima.com](http://www.trijayaprima.com) | [www.trijayaprimapersada.com](http://www.trijayaprimapersada.com) | [www.jeslynjayateknik.com](http://www.jeslynjayateknik.com)



**TJ-PARTS**  
SOLUTION FOR FUTURE

**TJ Industrial**  
Industrial Parts & Service